

# QUEEN



BY: Amaia Osa eta Montse Marin

# CHRONOLOGICAL ORDER

THE BEATLES → 1960

THE ROLLING STONES → 1962

THE WHO → 1964

PINK FLOYD → 1965

LED ZEPPELING → 1968

DEEP PURPLE → 1968

QUEEN → 1968

COLDPLAY → 1997

OASIS → 1991

SEX PISTOLS → 1975

IRON MAIDEN → 1975

THE CURE → 1976

RADIOHEAD → 1985

ARCTIC MONKEYS → 2002



# BIOGRAPHY

Queen are a British rock band that formed in London in 1970.

Their classic line-up was Freddie Mercury (lead vocals, piano), Brian May (lead guitar, vocals), Roger Taylor (drums, vocals), and John Deacon (bass guitar).



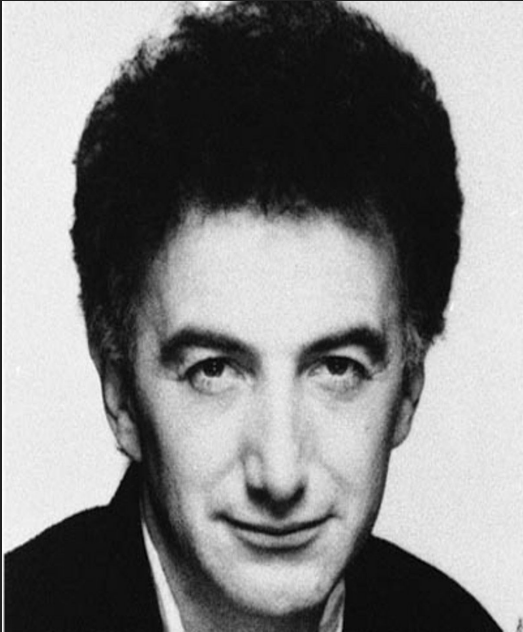
# FREDDIE MERCURY

Singer-songwriter Farrokh "Freddie" Mercury was born on September 5, 1946, in Zanzibar, Tanzania. He studied piano in boarding school in India and befriended numerous musicians at London's Ealing College of Art. Mercury died of AIDS-related bronchial pneumonia on November 24, 1991, at age 45.



# JOHN DEACON, BRIAN MAY, ROGER TAYLOR

**John Richard Deacon** (born 19 August 1951) is an English retired musician, best known for being the bass guitarist for the rock band Queen.



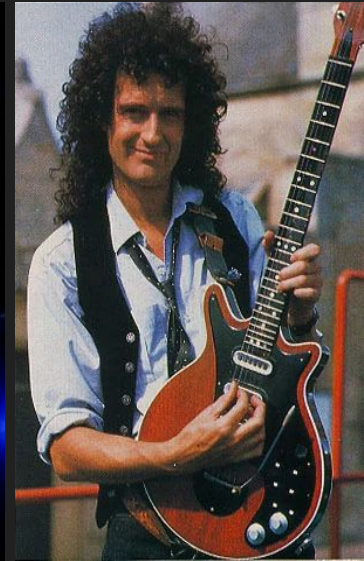
# JOHN DEACON, BRIAN MAY, ROGER TAYLOR

**Roger Meddows Taylor** (born 26 July 1949) is an English musician, best known as the drummer for the rock band Queen. As well as a multi-instrumentalist, he is also a singer and songwriter. As a drummer, Taylor was recognised early in his career for his unique sound.



# JOHN DEACON, BRIAN MAY, ROGER TAYLOR

**Brian Harold May**, (born 19 July 1947) is an English musician, singer, songwriter and astrophysicist, best known as the lead guitarist of the rock band Queen. He uses a home-built electric guitar, called the Red Special.



# HOW DID THE BAND COME TOGETHER?

Before forming Queen, Brian May and Roger Taylor had played together in a band named Smile. Freddie Mercury was a fan of Smile and encouraged them to experiment with more elaborate stage and recording techniques. Mercury joined the band in 1970, suggested "Queen" as a new band name, and adopted his familiar stage name.





# INFLUENCE

The band have been cited as an influence by many other musicians. Moreover, like their music, the bands and artists that have claimed to be influenced by Queen and have expressed admiration for them: George Michael, Guns N' Roses, Iron Maiden, Katy Perry, Lady Gaga, Metallica, Nirvana, Radiohead...



# THE 70'S

The 70s are characterized by the development of new musical movements, which are: punk, disco music, personal pop, heavy metal, latin rock, reggae, urban rock, techno pop, glam rock, and symphonic rock.



# IMPORTANT PEOPLE

In these years the most outstanding musicians, among others are Pink Floyd, Queen, Abba, Kraftwerk, Bruce Springsteen, Bob Marley, Thin Lizzy, Carlos Santana, The Bee Gees and Sex Pistols.



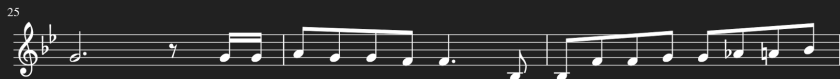
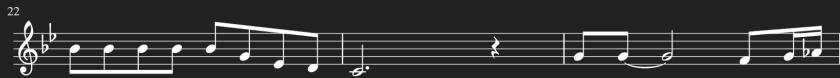
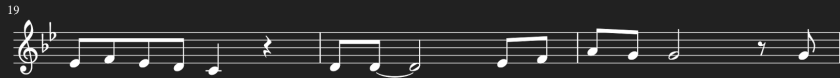
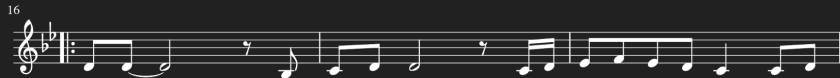
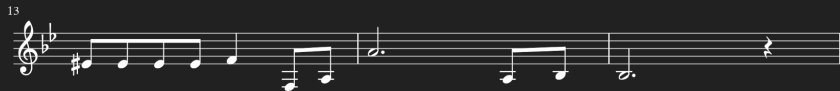
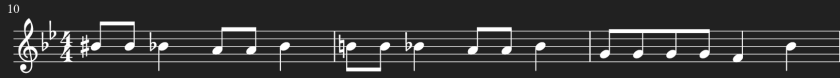
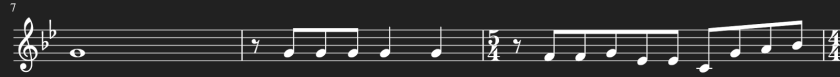
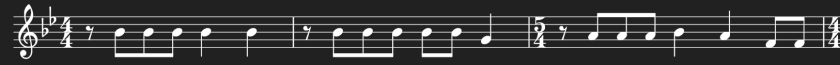
## TYPE OF MUSIC

Queen's earliest works were influenced by progressive rock, hard rock and heavy metal, but the band gradually ventured into more conventional and radio-friendly works by incorporating further styles, such as arena rock and pop rock, into their music.



# BOHEMIAN RHAPSODY

Amaia Osa eta Montse Marin



THANK YOU FOR YOUR

ATTENTION

WE HOPE YOU LIKE IT!